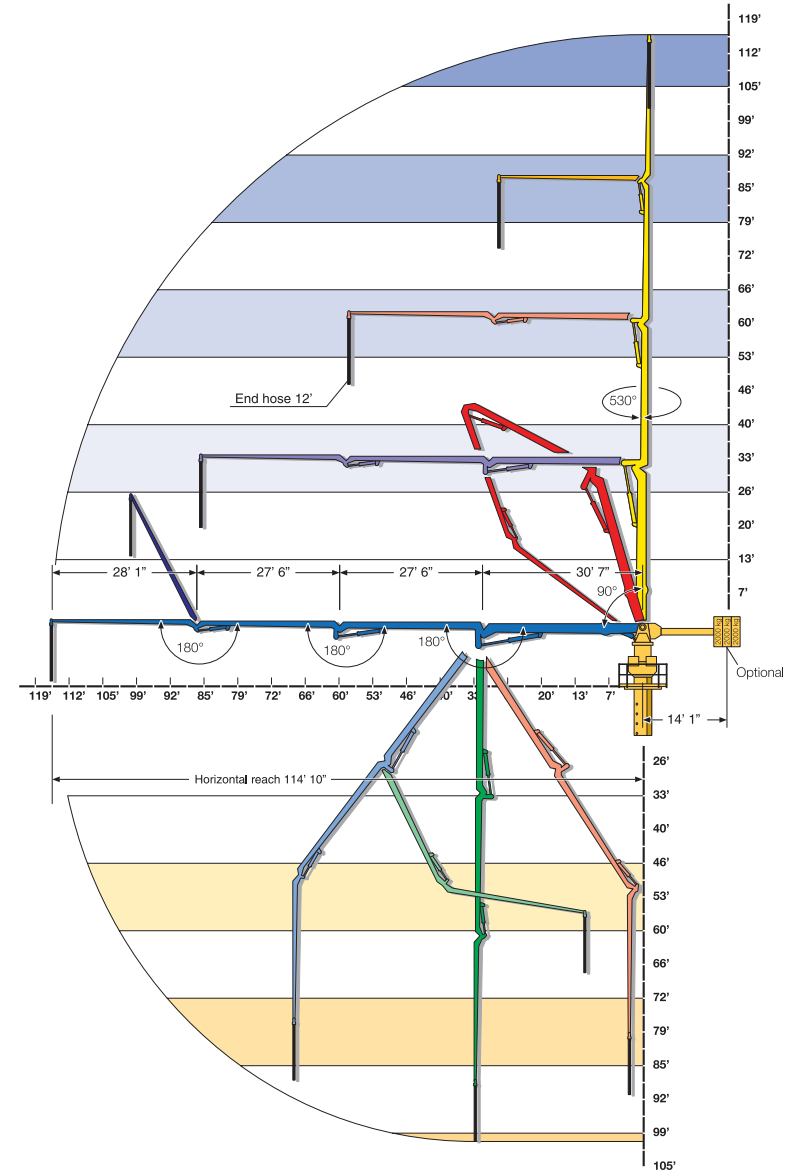


SPB 35

SPECIFICATIONS

	U.S.	Metric
Vertical Reach	114 ft	34.7 m
Horizontal Reach	114 ft	34.7 m
Below Grade Reach w/ Tip Hose	95' 1"	29 m
Pipeline Diameter	5 in	125 mm
Boom Type/ Sections	Full Articulation, Roll & Fold/ 4	
Boom Rotation	550 degrees	
Max. Free Standing Height on Octagonal Mast	51 ft	15.5 m
Total Picking Weight	12,890 lbs	5,846 kg



SCHWING®