

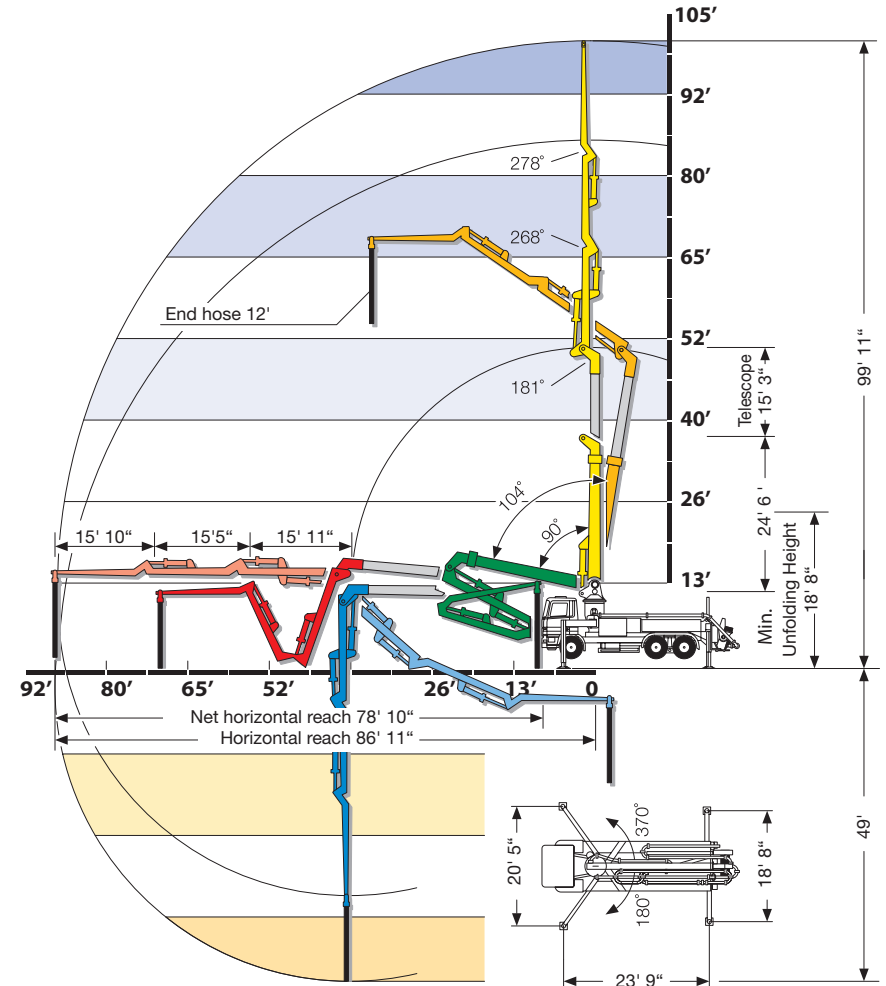
S 31 XT

SPECIFICATIONS

	U.S.	Metric
Vertical Reach	99' 11"	30.5 m
Horizontal Reach	86' 11"	26.5 m
Below Grade Reach w/ Tip Hose	49 ft	14.9 m
Pipeline Diameter	5 in	125 mm
Boom Type/ Sections	Fully articulating, H boom (Modified Z) Plus Telescopic Main/ 5	
Boom Rotation	730 degrees	
Unfolding Height	18' 8"	5.7 m
Outrigger Type- Front	Hydraulic Telescoping & Jacking	
Outrigger Type- Rear	Hydraulic Slewing & Jacking	
Outrigger Soil Pressure w/o Dunnage (front/rear)	203/158 psi	14/10.9 bar
Outrigger Soil Pressure w/ Dunnage (front/rear)	69/54 psi	4.8/3.7 bar
Outrigger Width, Front	20' 5"	6.2 m
Outrigger Width, Rear	18' 8"	5.7 m
Outrigger Length	23' 9"	7.2 m

PUMP SPECIFICATIONS

	U.S.	Metric
Theor. Concrete Output	208 cu yds/h	159 cu m/h
Max. Pressure on Concrete	1007 psi	70 bar
Max. Strokes Per Minute	32	
Max. Aggregate size	2.5 in	63.5 mm
Material Cylinder Diameter	9 in	230 mm
Material Cylinder Stroke	79 in	2006.6 mm
Differential Cylinder Diameter	5.1 in	130 mm
Maximum Oil Flow	132.1 gal/min	500 l/min
Hydraulic Circuitry Type	MPS	
Valve Type	M Rock	



*Pump specifications are for standard units. Other units are available. Specifications are subject to change without prior notice.

